

2021-2022

Helper Helper

REPORT



NCAA DI, DII, DIII

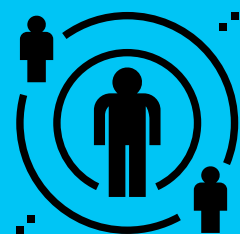


Helper Helper REPORT

During the 2021-2022 school year, we saw student-athletes getting back into their communities. Helper Helper is honored to work with these institutions and help encourage student-athletes to make a lasting impact. Throughout the year, student-athletes and staff used the Helper Helper app and online portal to coordinate and track their service efforts. This report highlights top teams, top schools, the winner of the fall school challenge and the winner of the spring team challenge.



TOTAL HOURS
286,788



OPPORTUNITIES
286,788



ECONOMIC IMPACT
\$7.3 M



PARTICIPANTS
33,360



TOP 25 SCHOOLS

1. UNIVERSITY OF NORTH DAKOTA
2. SAN JOSE STATE
3. TOWSON UNIVERSITY
4. JAMES MADISON UNIVERSITY
5. KENT STATE
6. GEORGIA SOUTHERN UNIVERSITY
7. UNIVERSITY OF LOUISIANA
8. UNIVERSITY OF TEXAS RIO GRANDE VALLEY
9. UNIVERSITY OF PITTSBURGH
10. UNIVERSITY OF MIAMI
11. STEPHEN F. AUSTIN STATE UNIVERSITY
12. WAKE FOREST UNIVERSITY
13. DEPAUL UNIVERSITY
14. PROVIDENCE COLLEGE
15. QUINNIPIAC UNIVERSITY
16. BUCKNELL UNIVERSITY
17. KANSAS STATE UNIVERSITY
18. UNIVERSITY OF ARIZONA
19. TULANE UNIVERSITY
20. OLD DOMINION UNIVERSITY
21. CLEMSON UNIVERSITY
22. UNIVERSITY OF NOTRE DAME
23. UNIVERSITY OF LOUISVILLE
24. TEXAS A&M UNIVERSITY
25. THE UNIVERSITY OF OKLAHOMA

TOP WOMEN'S TEAMS



1. Towson University

WOMEN'S GYMNASTICS



2. University of Louisiana

WOMEN'S TENNIS



3. Georgia Southern University

WOMEN'S BASKETBALL



4. Kent State University

WOMEN'S LACROSSE



5. James Madison University

WOMEN'S FIELD HOCKEY



TOP MEN'S TEAMS



1. University of Louisiana

MEN'S GOLF



2. University of South Alabama

MEN'S BASKETBALL



3. Ohio State University

MEN'S LACROSSE



4. Wake Forest University

MEN'S SOCCER



5. DePaul University

MEN'S GOLF

DIVISION I

156,225 HOURS

7,667 OPPORTUNITIES





TOP DI WOMEN'S SPORTS

BASKETBALL

1. GEORGIA SOUTHERN UNIVERSITY
2. TOWSON UNIVERSITY
3. UNIVERSITY OF MIAMI
4. UNIVERSITY OF NORTH DAKOTA
5. UNIVERSITY OF TEXAS RIO GRANDE VALLEY
6. TROY UNIVERSITY
7. SAN JOSE STATE
8. COLLEGE OF HOLY CROSS
9. MIZZOU ATHLETICS
10. UNIVERSITY OF ALABAMA AT BIRMINGHAM

VOLLEYBALL

1. GEORGIA SOUTHERN UNIVERSITY
2. CHARLOTTE 49ERS
3. SAN JOSE STATE
4. UNIVERSITY OF LOUISIANA
5. UNIVERSITY OF NORTH DAKOTA
6. UNIVERSITY OF MIAMI
7. KENT STATE
8. TULANE UNIVERSITY
9. OLD DOMINION UNIVERSITY
10. WAKE FOREST UNIVERSITY

TRACK & XC

1. UNIVERSITY OF TEXAS RIO GRANDE VALLEY
2. UNIVERSITY OF MIAMI
3. JAMES MADISON UNIVERSITY
4. ARKANSAS- LITTLE ROCK
5. BOWLING GREEN STATE UNIVERSITY
6. UNIVERSITY OF NORTH DAKOTA
7. NORTHERN ILLINOIS UNIVERSITY
8. PROVIDENCE COLLEGE
9. WAKE FOREST UNIVERSITY
10. QUINNIPIAC UNIVERSITY

FIELD HOCKEY

1. JAMES MADISON UNIVERSITY
2. PROVIDENCE COLLEGE
3. COLLEGE OF HOLY CROSS
4. UNIVERSITY OF LOUISVILLE
5. KENT STATE
6. TOWSON UNIVERSITY
7. UNIVERSITY OF IOWA
8. PENN STATE
9. WAKE FOREST UNIVERSITY
10. QUINNIPIAC UNIVERSITY

LACROSSE

1. KENT STATE
2. UNIVERSITY OF LOUISVILLE
3. UNIVERSITY OF NOTRE DAME
4. UNIVERSITY OF PITTSBURGH
5. OLD DOMINION UNIVERSITY
6. JAMES MADISON UNIVERSITY
7. TOWSON UNIVERSITY
8. PENN STATE
9. QUINNIPIAC UNIVERSITY
10. UNIVERSITY OF MICHIGAN

GYMNASTICS

1. TOWSON UNIVERSITY
2. WEST VIRGINIA UNIVERSITY
3. NORTHERN ILLINOIS UNIVERSITY
4. OREGON STATE UNIVERSITY
5. UNIVERSITY OF PITTSBURGH
6. SAN JOSE STATE
7. UNIVERSITY OF IOWA
8. EASTERN MICHIGAN UNIVERSITY
9. KENT STATE
10. BOWLING GREEN STATE UNIVERSITY

GOLF

1. BOWLING GREEN STATE UNIVERSITY
2. UNIVERSITY OF NORTH DAKOTA
3. NORTHERN ILLINOIS UNIVERSITY
4. UNIVERSITY OF TEXAS RIO GRANDE VALLEY
5. JAMES MADISON UNIVERSITY
6. RUTGERS UNIVERSITY
7. OHIO STATE UNIVERSITY
8. OREGON STATE UNIVERSITY
9. KENT STATE
10. UNIVERSITY OF ARIZONA

ROWING

1. UNIVERSITY OF MIAMI
2. COLLEGE OF HOLY CROSS
3. WEST VIRGINIA UNIVERSITY
4. OLD DOMINION UNIVERSITY
5. KANSAS STATE UNIVERSITY
6. UNIVERSITY OF NOTRE DAME
7. CLEMSON UNIVERSITY
8. BUCKNELL UNIVERSITY
9. OREGON STATE UNIVERSITY
10. UNIVERSITY OF IOWA

SWIM & DIVE

1. GEORGIA SOUTHERN UNIVERSITY
2. UNIVERSITY OF MIAMI
3. UNIVERSITY OF LOUISVILLE
4. TULANE UNIVERSITY
5. PROVIDENCE COLLEGE
6. BOWLING GREEN STATE UNIVERSITY
7. WEST VIRGINIA UNIVERSITY
8. UNIVERSITY OF IOWA
9. TOWSON UNIVERSITY
10. COLLEGE OF HOLY CROSS



SOCCER

1. OLD DOMINION UNIVERSITY
2. TOWSON UNIVERSITY
3. UNIVERSITY OF NORTH DAKOTA
4. BUCKNELL UNIVERSITY
5. WAKE FOREST UNIVERSITY
6. UNIVERSITY OF MIAMI
7. KANSAS STATE UNIVERSITY
8. GEORGIA SOUTHERN UNIVERSITY
9. UNIVERSITY OF LOUISIANA AT MONROE
10. SAN JOSE STATE

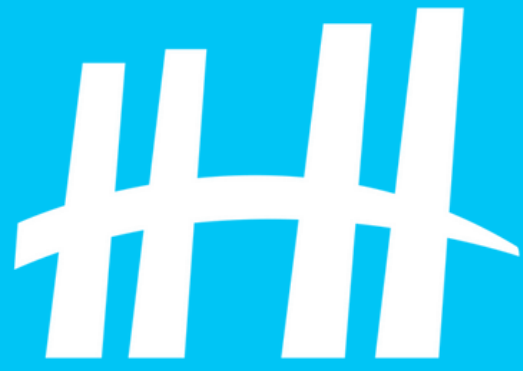
TENNIS

1. UNIVERSITY OF LOUISIANA
2. UNIVERSITY OF TEXAS RIO GRANDE VALLEY
3. UNIVERSITY OF ALABAMA AT BIRMINGHAM
4. UNIVERSITY OF MONTANA
5. GEORGIA SOUTHERN UNIVERSITY
6. UNIVERSITY OF ARIZONA
7. UNIVERSITY OF NORTH DAKOTA
8. JAMES MADISON UNIVERSITY
9. KANSAS STATE UNIVERSITY
10. UNIVERSITY OF NOTRE DAME

SOFTBALL

1. UNIVERSITY OF LOUISIANA AT MONROE
2. JAMES MADISON UNIVERSITY
3. NORTHERN ILLINOIS UNIVERSITY
4. STEPHEN F. AUSTIN STATE UNIVERSITY
5. GEORGIA SOUTHERN UNIVERSITY
6. UNIVERSITY OF NORTH DAKOTA
7. LOUISIANA STATE UNIVERSITY
8. UNIVERSITY OF NOTRE DAME
9. UNIVERSITY OF TEXAS AT ARLINGTON
10. BOWLING GREEN STATE UNIVERSITY





TOP DI MEN'S SPORTS

BASKETBALL

1. UNIVERSITY OF SOUTH ALABAMA
2. TOWSON UNIVERSITY
3. JAMES MADISON UNIVERSITY
4. GEORGIA SOUTHERN UNIVERSITY
5. UNIVERSITY OF NORTH DAKOTA
6. NORTH CAROLINA CENTRAL UNIVERSITY
7. OLD DOMINION UNIVERSITY
8. KENT STATE
9. MIZZOU ATHLETICS
10. UNIVERSITY OF MIAMI

FOOTBALL

1. UNIVERSITY OF PITTSBURGH
2. TOWSON UNIVERSITY
3. UNIVERSITY OF NORTH DAKOTA
4. STEPHEN F. AUSTIN STATE UNIVERSITY
5. TEXAS TECH UNIVERSITY
6. WAKE FOREST UNIVERSITY
7. KENT STATE
8. KANSAS STATE UNIVERSITY
9. UNIVERSITY OF ARIZONA
10. BUCKNELL UNIVERSITY

TRACK & XC

1. UNIVERSITY OF MIAMI
2. UNIVERSITY OF TEXAS RIO GRANDE VALLEY
3. PROVIDENCE COLLEGE
4. BOWLING GREEN STATE UNIVERSITY
5. EASTERN MICHIGAN UNIVERSITY
6. QUINNIAC UNIVERSITY
7. BUCKNELL UNIVERSITY
8. DEPAUL UNIVERSITY
9. WAKE FOREST UNIVERSITY
10. NORTH CAROLINA STATE

SOCCER

1. WAKE FOREST UNIVERSITY
2. JAMES MADISON UNIVERSITY
3. DEPAUL UNIVERSITY
4. UNIVERSITY OF TEXAS RIO GRANDE VALLEY
5. UNIVERSITY OF LOUISVILLE
6. FLORIDA INTERNATIONAL UNIVERSITY
7. OHIO STATE UNIVERSITY
8. CHARLOTTE 49ERS
9. PROVIDENCE COLLEGE
10. QUINNIAC UNIVERSITY

LACROSSE

1. OHIO STATE UNIVERSITY
2. UNIVERSITY OF NOTRE DAME
3. PROVIDENCE COLLEGE
4. BUCKNELL UNIVERSITY
5. COLLEGE OF HOLY CROSS
6. QUINNIAC UNIVERSITY
7. UNIVERSITY OF MICHIGAN
8. MONMOUTH UNIVERSITY
9. PENN STATE
10. TOWSON UNIVERSITY

WRESTLING

1. KENT STATE
2. NORTHERN ILLINOIS UNIVERSITY
3. UNIVERSITY OF PITTSBURGH
4. UNIVERSITY OF IOWA
5. OREGON STATE UNIVERSITY
6. BUCKNELL UNIVERSITY
7. MIZZOU ATHLETICS
8. WEST VIRGINIA UNIVERSITY
9. UNIVERSITY OF IOWA
10. PENN STATE

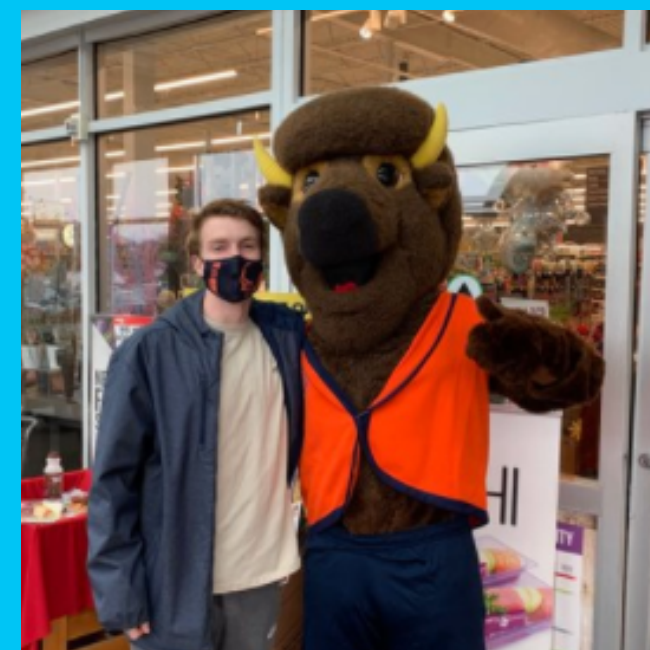
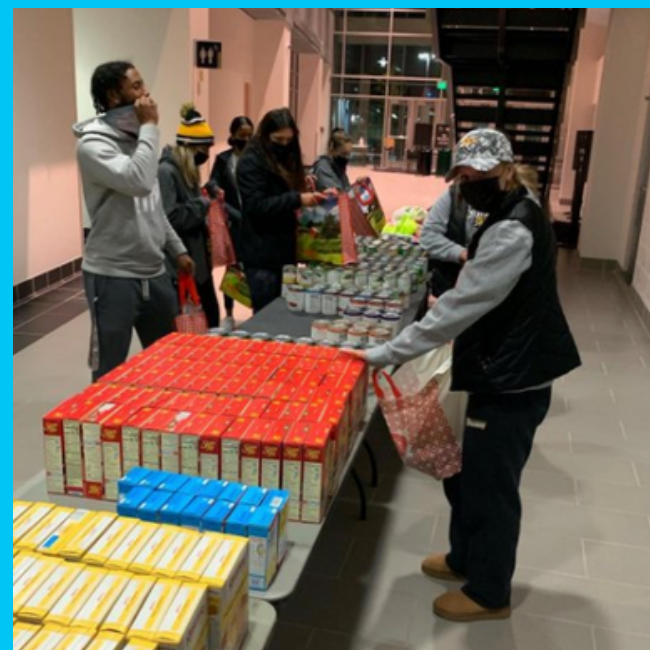
GOLF

1. UNIVERSITY OF LOUISIANA
2. DEPAUL UNIVERSITY
3. SAN JOSE STATE
4. TOWSON UNIVERSITY
5. UNIVERSITY OF TEXAS RIO GRANDE VALLEY
6. UNIVERSITY OF NORTH DAKOTA
7. UNIVERSITY OF FLORIDA
8. KENT STATE
9. UNIVERSITY OF ARIZONA
10. JAMES MADISON UNIVERSITY



SWIM & DIVE

1. PROVIDENCE COLLEGE
2. WEST VIRGINIA UNIVERSITY
3. OLD DOMINION UNIVERSITY
4. UNIVERSITY OF MIAMI
5. TEXAS A&M UNIVERSITY
6. BUCKNELL UNIVERSITY
7. PENN STATE
8. COLLEGE OF HOLY CROSS
9. NORTH CAROLINA STATE
10. TEXAS CHRISTIAN UNIVERSITY



TENNIS

1. BUCKNELL UNIVERSITY
2. UNIVERSITY OF ARIZONA
3. DEPAUL UNIVERSITY
4. JAMES MADISON UNIVERSITY
5. GEORGIA SOUTHERN UNIVERSITY
6. UNIVERSITY OF NOTRE DAME
7. UNIVERSITY OF MIAMI
8. CLEMSON UNIVERSITY
9. OHIO STATE UNIVERSITY
10. TEXAS A&M UNIVERSITY






BASEBALL

1. UNIVERSITY OF LOUISIANA
2. KANSAS STATE UNIVERSITY
3. TOWSON UNIVERSITY
4. UNIVERSITY OF PITTSBURGH
5. UNIVERSITY OF LOUISIANA AT MONROE
6. MIZZOU ATHLETICS
7. UNIVERSITY OF TEXAS RIO GRANDE VALLEY
8. JAMES MADISON UNIVERSITY
9. STEPHEN F. AUSTIN STATE UNIVERSITY
10. BOWLING GREEN STATE UNIVERSITY

TOP 25 SCHOOLS

1. GEORGIA SOUTHWESTERN STATE UNIVERSITY
2. ARKANSAS TECH UNIVERSITY
3. AUBURN UNIVERSITY AT MONTGOMERY
4. CLAYTON STATE UNIVERSITY
5. UNIVERSITY OF COLORADO, COLORADO SPRINGS
6. EMPORIA STATE UNIVERSITY
7. COKER UNIVERSITY
8. METROPOLITAN STATE UNIVERSITY OF DENVER
9. LENOIR-RHYNE UNIVERSITY
10. GEORGIAN COURT UNIVERSITY
11. MIDWESTERN STATE UNIVERSITY
12. COLORADO MESA UNIVERSITY
13. WAYNE STATE UNIVERSITY
14. MERCY COLLEGE
15. WINONA STATE UNIVERSITY
16. SOUTHERN ARKANSAS UNIVERSITY
17. BELMONT ABBEY COLLEGE
18. REGIS UNIVERSITY
19. KENTUCKY WESLEYAN COLLEGE
20. FLAGLER COLLEGE
21. MOLLOY COLLEGE
22. FLORIDA SOUTHERN COLLEGE
23. POST UNIVERSITY
24. WALSH UNIVERSITY
25. QUEENS UNIVERSITY OF CHARLOTTE

TOP WOMEN'S TEAMS

- 
1. **Molloy College**
WOMEN'S VOLLEYBALL
 2. **Arkansas Tech University**
WOMEN'S VOLLEYBALL
 3. **Georgian Court University**
WOMEN'S BASKETBALL
 4. **Lenoir-Rhyne University**
WOMEN'S SWIMMING AND DIVING
 5. **Wayne State University**
WOMEN'S BASKETBALL



TOP MEN'S TEAMS

- 
1. **Wayne State University**
MEN'S TENNIS
 2. **Lenoir-Rhyne University**
MEN'S SWIMMING & DIVING
 3. **Clayton State University**
MEN'S TENNIS
 4. **UCCS**
MEN'S SOCCER
 5. **GSW**
MEN'S GOLF

DIVISION II

104,903 HOURS

2,442 OPPORTUNITIES





TOP DII WOMEN'S SPORTS

BASKETBALL

1. GEORGIAN COURT UNIVERSITY
2. WAYNE STATE UNIVERSITY
3. COKER UNIVERSITY
4. CLAYTON STATE UNIVERSITY
5. MIDWESTERN STATE UNIVERSITY
6. REGIS UNIVERSITY
7. UNIVERSITY OF WEST GEORGIA
8. FLAGLER COLLEGE
9. UNIVERSITY OF COLORADO, COLORADO SPRINGS
10. METROPOLITAN STATE UNIVERSITY OF DENVER

VOLLEYBALL

1. MOLLOY COLLEGE
2. ARKANSAS TECH UNIVERSITY
3. ANGELO STATE UNIVERSITY
4. METROPOLITAN STATE UNIVERSITY OF DENVER
5. MIDWESTERN STATE UNIVERSITY
6. WINONA STATE UNIVERSITY
7. REGIS UNIVERSITY
8. UNIVERSITY OF COLORADO, COLORADO SPRINGS
9. GEORGIAN COURT UNIVERSITY
10. LENOIR-RHYNE UNIVERSITY

TRACK & XC

1. AUBURN UNIVERSITY AT MONTGOMERY
2. ANGELO STATE UNIVERSITY
3. MIDWESTERN STATE UNIVERSITY
4. FLORIDA SOUTHERN COLLEGE
5. CLAYTON STATE UNIVERSITY
6. EMPORIA STATE UNIVERSITY
7. UNIVERSITY OF COLORADO, COLORADO SPRINGS
8. COKER UNIVERSITY
9. SOUTHERN ARKANSAS UNIVERSITY
10. COLORADO MESA UNIVERSITY

FIELD HOCKEY

1. MOLLOY COLLEGE
2. COKER UNIVERSITY
3. QUEENS UNIVERSITY OF CHARLOTTE
4. MERCY COLLEGE
5. FRANKLIN PIERCE UNIVERSITY
6. BELMONT ABBEY COLLEGE
7. LIMESTONE UNIVERSITY
8. ADELPHI UNIVERSITY

LACROSSE

1. COKER UNIVERSITY
2. LENOIR-RHYNE UNIVERSITY
3. UNIVERSITY OF COLORADO, COLORADO SPRINGS
4. MOLLOY COLLEGE
5. BELMONT ABBEY COLLEGE
6. COLORADO MESA UNIVERSITY
7. MERCY COLLEGE
8. DAEMEN COLLEGE
9. POST UNIVERSITY
10. FLORIDA INSTITUTE OF TECHNOLOGY



GOLF

1. FLAGLER COLLEGE
2. COKER UNIVERSITY
3. POST UNIVERSITY
4. METROPOLITAN STATE UNIVERSITY OF DENVER
5. MIDWESTERN STATE UNIVERSITY
6. LENOIR-RHYNE UNIVERSITY
7. WALSH UNIVERSITY
8. COLORADO MESA UNIVERSITY
9. FRANKLIN PIERCE UNIVERSITY
10. UNIVERSITY OF COLORADO, COLORADO SPRINGS



SWIM & DIVE

1. LENOIR-RHYNE UNIVERSITY
2. DAVIS & ELKINS COLLEGE
3. COLORADO MESA UNIVERSITY
4. WAYNE STATE UNIVERSITY
5. QUEENS UNIVERSITY OF CHARLOTTE
6. FLORIDA INSTITUTE OF TECHNOLOGY
7. FLORIDA SOUTHERN COLLEGE



SOCCER

1. CLAYTON STATE UNIVERSITY
2. AUBURN UNIVERSITY AT MONTGOMERY
3. GEORGIAN COURT UNIVERSITY
4. FLORIDA SOUTHERN COLLEGE
5. UNIVERSITY OF COLORADO, COLORADO SPRINGS
6. METROPOLITAN STATE UNIVERSITY OF DENVER
7. BELMONT ABBEY COLLEGE
8. MOLLOY COLLEGE
9. MERCY COLLEGE
10. COLORADO MESA UNIVERSITY

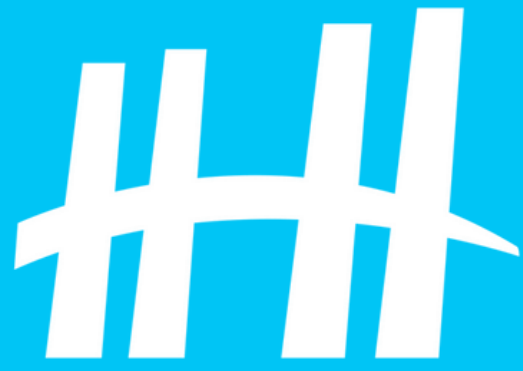
TENNIS

1. AUBURN UNIVERSITY AT MONTGOMERY
2. MIDWESTERN STATE UNIVERSITY
3. METROPOLITAN STATE UNIVERSITY OF DENVER
4. WAYNE STATE UNIVERSITY
5. FLORIDA SOUTHERN COLLEGE
6. LENOIR-RHYNE UNIVERSITY
7. POST UNIVERSITY
8. COLORADO MESA UNIVERSITY
9. WINGATE UNIVERSITY
10. LIMESTONE UNIVERSITY

SOFTBALL

1. ARKANSAS TECH UNIVERSITY
2. EMPORIA STATE UNIVERSITY
3. METROPOLITAN STATE UNIVERSITY OF DENVER
4. FLAGLER COLLEGE
5. POST UNIVERSITY
6. LENOIR-RHYNE UNIVERSITY
7. LIMESTONE UNIVERSITY
8. WAYNE STATE UNIVERSITY
9. COKER UNIVERSITY
10. WINONA STATE UNIVERSITY





TOP DII MEN'S SPORTS

BASKETBALL

1. EMPORIA STATE UNIVERSITY
2. FLAGLER COLLEGE
3. UNIVERSITY OF COLORADO, COLORADO SPRINGS
4. ARKANSAS TECH UNIVERSITY
5. SOUTHERN ARKANSAS UNIVERSITY
6. AUBURN UNIVERSITY AT MONTGOMERY
7. KENTUCKY WESLEYAN COLLEGE
8. LENOIR-RHYNE UNIVERSITY
9. METROPOLITAN STATE UNIVERSITY OF DENVER
10. BELMONT ABBEY COLLEGE

FOOTBALL

1. LENOIR-RHYNE UNIVERSITY
2. WINONA STATE UNIVERSITY
3. MIDWESTERN STATE UNIVERSITY
4. COLORADO MESA UNIVERSITY
5. ARKANSAS TECH UNIVERSITY
6. EMPORIA STATE UNIVERSITY
7. KENTUCKY WESLEYAN COLLEGE
8. SOUTHERN NAZARENE UNIVERSITY
9. SOUTHERN ARKANSAS UNIVERSITY
10. WALSH UNIVERSITY

TRACK & XC

1. ANGELO STATE UNIVERSITY
2. UNIVERSITY OF COLORADO, COLORADO SPRINGS
3. AUBURN UNIVERSITY AT MONTGOMERY
4. SOUTHERN ARKANSAS UNIVERSITY
5. COLORADO MESA UNIVERSITY
6. WAYNE STATE UNIVERSITY
7. EMPORIA STATE UNIVERSITY
8. WINGATE UNIVERSITY
9. CLAYTON STATE UNIVERSITY
10. MOLLOY COLLEGE

SOCCER

1. UNIVERSITY OF COLORADO, COLORADO SPRINGS
2. REGIS UNIVERSITY
3. LENOIR-RHYNE UNIVERSITY
4. FLORIDA SOUTHERN COLLEGE
5. CLAYTON STATE UNIVERSITY
6. METROPOLITAN STATE UNIVERSITY OF DENVER
7. BELMONT ABBEY COLLEGE
8. AUBURN UNIVERSITY AT MONTGOMERY
9. FLAGLER COLLEGE
10. MERCY COLLEGE

LACROSSE

1. POST UNIVERSITY
2. FLORIDA SOUTHERN COLLEGE
3. BELMONT ABBEY COLLEGE
4. GEORGIAN COURT UNIVERSITY
5. WALSH UNIVERSITY
6. LENOIR-RHYNE UNIVERSITY
7. COLORADO MESA UNIVERSITY
8. MERCY COLLEGE
9. QUEENS UNIVERSITY OF CHARLOTTE
10. MOLLOY COLLEGE

WRESTLING

1. DAVIS & ELKINS COLLEGE
2. KENTUCKY WESLEYAN COLLEGE
3. COLORADO MESA UNIVERSITY
4. BELMONT ABBEY COLLEGE
5. COKER UNIVERSITY
6. QUEENS UNIVERSITY OF CHARLOTTE

GOLF

1. CLAYTON STATE UNIVERSITY
2. GEORGIA SOUTHWESTERN STATE UNIVERSITY
3. COKER UNIVERSITY
4. POST UNIVERSITY
5. COLORADO MESA UNIVERSITY
6. MIDWESTERN STATE UNIVERSITY
7. FLORIDA SOUTHERN COLLEGE
8. UNIVERSITY OF COLORADO, COLORADO SPRINGS
9. SOUTHERN ARKANSAS UNIVERSITY
10. FRANKLIN PIERCE UNIVERSITY



SWIM & DIVE

1. LENOIR-RHYNE UNIVERSITY
2. DAVIS & ELKINS COLLEGE
3. COLORADO MESA UNIVERSITY
4. QUEENS UNIVERSITY OF CHARLOTTE
5. WAYNE STATE UNIVERSITY
6. FLORIDA INSTITUTE OF TECHNOLOGY
7. WINGATE UNIVERSITY



TENNIS

1. WAYNE STATE UNIVERSITY
2. AUBURN UNIVERSITY AT MONTGOMERY
3. FLAGLER COLLEGE
4. METROPOLITAN STATE UNIVERSITY OF DENVER
5. MIDWESTERN STATE UNIVERSITY
6. LIMESTONE UNIVERSITY
7. COLORADO MESA UNIVERSITY
8. WINGATE UNIVERSITY
9. LENOIR-RHYNE UNIVERSITY
10. DAEMEN COLLEGE

BASEBALL

1. COKER UNIVERSITY
2. EMPORIA STATE UNIVERSITY
3. AUBURN UNIVERSITY AT MONTGOMERY
4. METROPOLITAN STATE UNIVERSITY OF DENVER
5. SOUTHERN ARKANSAS UNIVERSITY
6. WINONA STATE UNIVERSITY
7. UNIVERSITY OF COLORADO, COLORADO SPRINGS
8. FLAGLER COLLEGE
9. COLORADO MESA UNIVERSITY
10. GEORGIA SOUTHWESTERN STATE UNIVERSITY

TOP SCHOOLS

1. SAINT MARY'S UNIVERSITY OF MINNESOTA
2. SHENANDOAH UNIVERSITY
3. SUNY OSWEGO
4. NEW JERSEY CITY UNIVERSITY
5. UNIVERSITY OF THE OZARKS
6. ADRIAN COLLEGE
7. PACIFIC LUTHERAN UNIVERSITY
8. RENSSELAER POLYTECHNIC INSTITUTE
9. ELMHURST UNIVERSITY

TOP WOMEN'S TEAMS



1. **SUNY Oswego**
WOMEN'S ICE HOCKEY



2. **SMU Minnesota**
WOMEN'S ICE HOCKEY



3. **Shenandoah University**
WOMEN'S FIELD HOCKEY



4. **Shenandoah University**
WOMEN'S LACROSSE



5. **SUNY Oswego**
WOMEN'S FIELD HOCKEY



DIVISION III

17,657 HOURS

503 OPPORTUNITIES

TOP MEN'S TEAMS



1. **Shenandoah University**
MEN'S BASEBALL



2. **SUNY Oswego**
MEN'S ICE HOCKEY



3. **Adrian College**
MEN'S LACROSSE



4. **University of the Ozarks**
MEN'S BASEBALL



5. **SUNY Oswego**
MEN'S BASKETBALL





TOP DIII SPORTS

BASKETBALL

1. MEN'S- SUNY OSWEGO
2. WOMEN'S- SHENANDOAH UNIVERSITY
3. MEN'S- NEW JERSEY CITY UNIVERSITY
4. MEN'S- PACIFIC LUTHERAN UNIVERSITY
5. WOMEN'S- ELMHURST UNIVERSITY
6. WOMEN'S- PACIFIC LUTHERAN UNIVERSITY
7. WOMEN'S- SUNY OSWEGO
8. MEN'S- ELMHURST UNIVERSITY
9. MEN'S- SMU MINNESOTA
10. WOMEN'S- SMU MINNESOTA

VOLLEYBALL

1. WOMEN'S- SMU MINNESOTA
2. WOMEN'S- NEW JERSEY CITY UNIVERSITY
3. MEN'S- NEW JERSEY CITY UNIVERSITY
4. WOMEN'S- SHENANDOAH UNIVERSITY
5. MEN'S- ADRIAN COLLEGE
6. WOMEN'S ADRIAN COLLEGE
7. WOMEN'S- SUNY OSWEGO
8. WOMEN'S- PACIFIC LUTHERAN UNIVERSITY

TRACK & XC

1. CO-ED- SHENANDOAH UNIVERSITY
2. MEN'S NEW JERSEY CITY UNIVERSITY
3. CO-ED- PACIFIC LUTHERAN UNIVERSITY
4. WOMEN'S- NEW JERSEY CITY UNIVERSITY
5. MEN'S NEW JERSEY CITY UNIVERSITY
6. CO-ED- UNIVERSITY OF THE OZARKS
7. CO-ED- ADRIAN COLLEGE
8. WOMEN'S- SMU MINNESOTA
9. WOMEN'S- RENSSELAER POLYTECHNIC INSTITUTE
10. WOMEN'S- ELMHURST UNIVERSITY



LACROSSE

1. MEN'S- ADRIAN COLLEGE
2. MEN'S- SHENANDOAH UNIVERSITY
3. MEN'S- SUNY OSWEGO
4. MEN'S- ADRIAN COLLEGE
5. MEN'S- RENSSELAER POLYTECHNIC INSTITUTE
6. MEN'S- SHENANDOAH UNIVERSITY
7. MEN'S- RENSSELAER POLYTECHNIC INSTITUTE
8. MEN'S- ELMHURST UNIVERSITY
9. MEN'S- SUNY OSWEGO



GOLF

1. MEN'S- SUNY OSWEGO
2. MEN'S- NEW JERSEY CITY UNIVERSITY
3. WOMEN'S- NEW JERSEY CITY UNIVERSITY
4. CO-ED- ADRIAN COLLEGE
5. WOMEN'S- PACIFIC LUTHERAN UNIVERSITY
6. CO-ED- SHENANDOAH UNIVERSITY
7. WOMEN'S- ELMHURST UNIVERSITY
8. MEN'S- PACIFIC LUTHERAN UNIVERSITY
9. MEN'S- ELMHURST UNIVERSITY



SWIM & DIVE

1. CO-ED- UNIVERSITY OF THE OZARKS
2. MEN'S- SUNY OSWEGO
3. WOMEN'S- SUNY OSWEGO
4. WOMEN'S- RENSSELAER POLYTECHNIC INSTITUTE
5. MEN'S- RENSSELAER POLYTECHNIC INSTITUTE

WRESTLING

1. MEN'S- ADRIAN COLLEGE
2. MEN'S- SUNY OSWEGO
3. MEN'S- UNIVERSITY OF THE OZARKS
4. MEN'S- UNIVERSITY OF THE OZARKS
5. MEN'S- NEW JERSEY CITY UNIVERSITY
6. MEN'S- NEW JERSEY CITY UNIVERSITY
7. MEN'S- ADRIAN COLLEGE

SOCCER

1. MEN'S- SUNY OSWEGO
2. MEN'S- NEW JERSEY CITY UNIVERSITY
3. WOMEN'S- SUNY OSWEGO
4. WOMEN'S- UNIVERSITY OF THE OZARKS
5. MEN'S- SMU MINNESOTA
6. WOMEN'S- SHENANDOAH UNIVERSITY
7. WOMEN'S- SMU MINNESOTA
8. WOMEN'S- RENSSELAER POLYTECHNIC INSTITUTE
9. WOMEN'S- NEW JERSEY CITY UNIVERSITY
10. MEN'S- SHENANDOAH UNIVERSITY

TENNIS

1. WOMEN'S- NEW JERSEY CITY UNIVERSITY
2. CO-ED- UNIVERSITY OF THE OZARKS
3. CO-ED- SMU MINNESOTA
4. WOMEN'S- PACIFIC LUTHERAN UNIVERSITY
5. WOMEN'S- NEW JERSEY CITY UNIVERSITY
6. WOMEN'S- RENSSELAER POLYTECHNIC INSTITUTE
7. MEN'S- SUNY OSWEGO

SOFTBALL/BASEBALL

1. BASEBALL- UNIVERSITY OF THE OZARKS
2. BASEBALL- SUNY OSWEGO
3. SOFTBALL- SUNY OSWEGO
4. BASEBALL- NEW JERSEY CITY UNIVERSITY
5. BASEBALL- PACIFIC LUTHERAN UNIVERSITY
6. BASEBALL- ELMHURST UNIVERSITY
7. BASEBALL- SMU MINNESOTA
8. SOFTBALL- NEW JERSEY CITY UNIVERSITY
9. SOFTBALL- SMU MINNESOTA
10. SOFTBALL- UNIVERSITY OF THE OZARKS



2022

NCAA® TEAM WORKS™ SERVICE CHALLENGE AWARD



POWERED BY **Helper Helper**



DIVISION I

- 1- UNIVERSITY OF NORTH DAKOTA
- 2- TOWSON UNIVERSITY
- 3- UNIVERSITY OF MIAMI
- 4- KENT STATE
- 5- UNIVERSITY OF LOUISIANA AT LAFAYETTE

59,196 HOURS

\$1.6 Million
economic impact

DIVISION II

- 1- ARKANSAS TECH UNIVERSITY
- 2- GEORGIAN COURT UNIVERSITY
- 3- GEORGIA SOUTHWESTERN STATE UNIVERSITY
- 4- CLAYTON STATE UNIVERSITY
- 5- UNIVERSITY OF COLORADO, COLORADO SPRINGS

34,626 HOURS

\$988,226
economic impact

DIVISION III

- 1- SAINT MARY'S UNIVERSITY OF MINNESOTA
- 2- SHENANDOAH UNIVERSITY
- 3- UNIVERSITY OF THE OZARKS
- 4- PACIFIC LUTHERAN UNIVERSITY
- 5- ADRIAN COLLEGE

4,767 HOURS

\$136,050
economic impact

60,881

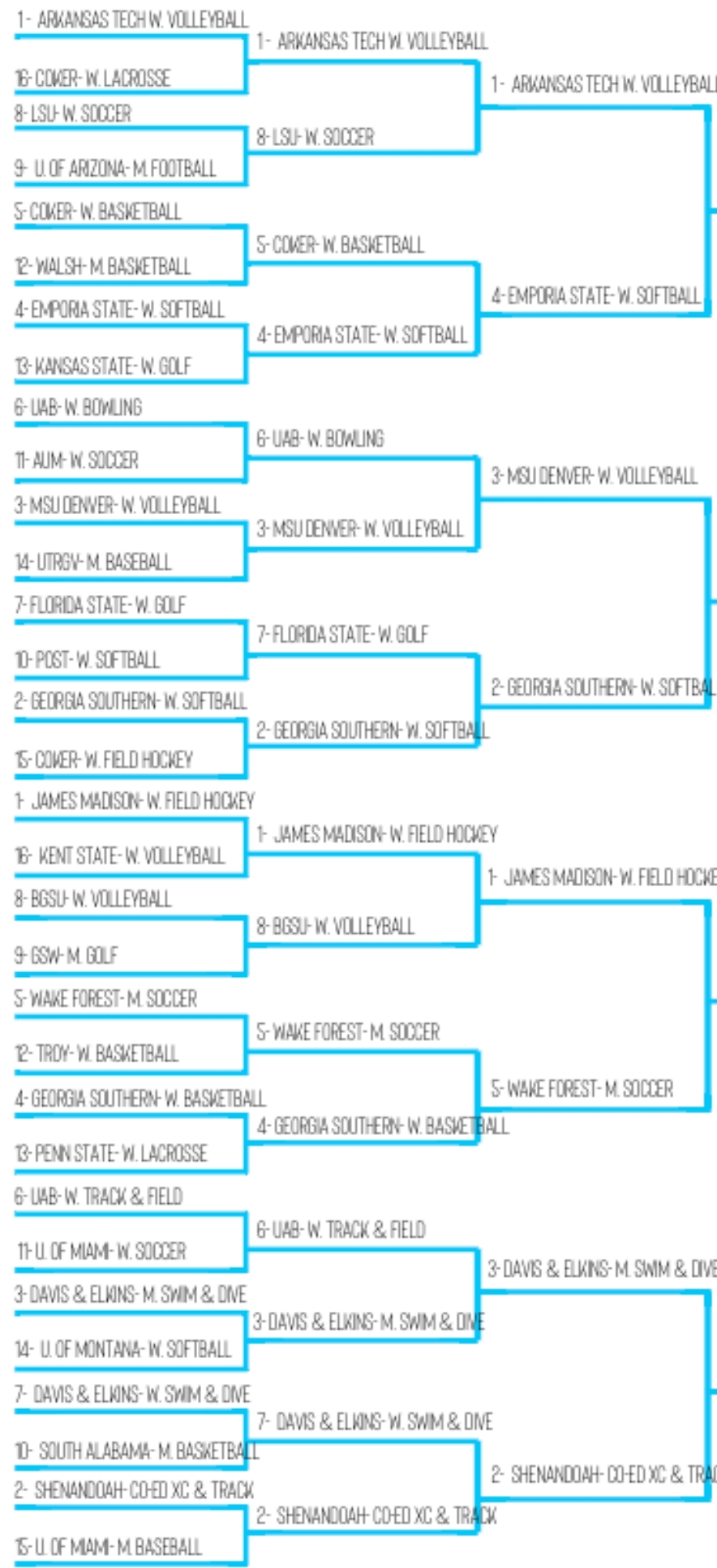
student-athletes

98,589

HOURS

\$2.8

economic
impact



5- WAKE FOREST- M. SOCCER

Helper Helper
TEAM CHALLENGE

2022
NCAA DI DII DIII



COMMUNITY SERVICE

WAKE FOREST- MEN'S SOCCER



CHAMPION



RANKINGS WILL BE BASED OFF TEAMS IMPACT SCORE WHICH IS CALCULATED USING HOURS PER STUDENT AND PERCENT PARTICIPATION FROM JULY 1

3- U. LOUISIANA- W. TENNIS

3- U. LOUISIANA- W. TENNIS

4- U. OF MIAMI- W. ROWING



408-AVERAGE # OF STUDENT-ATHLETES

TOP 25 vs TOP 10
3,463 - 4,184

AVERAGE NUMBER OF HOURS PER SCHOOL

72% - 75%

PERCENT PARTICIPATION

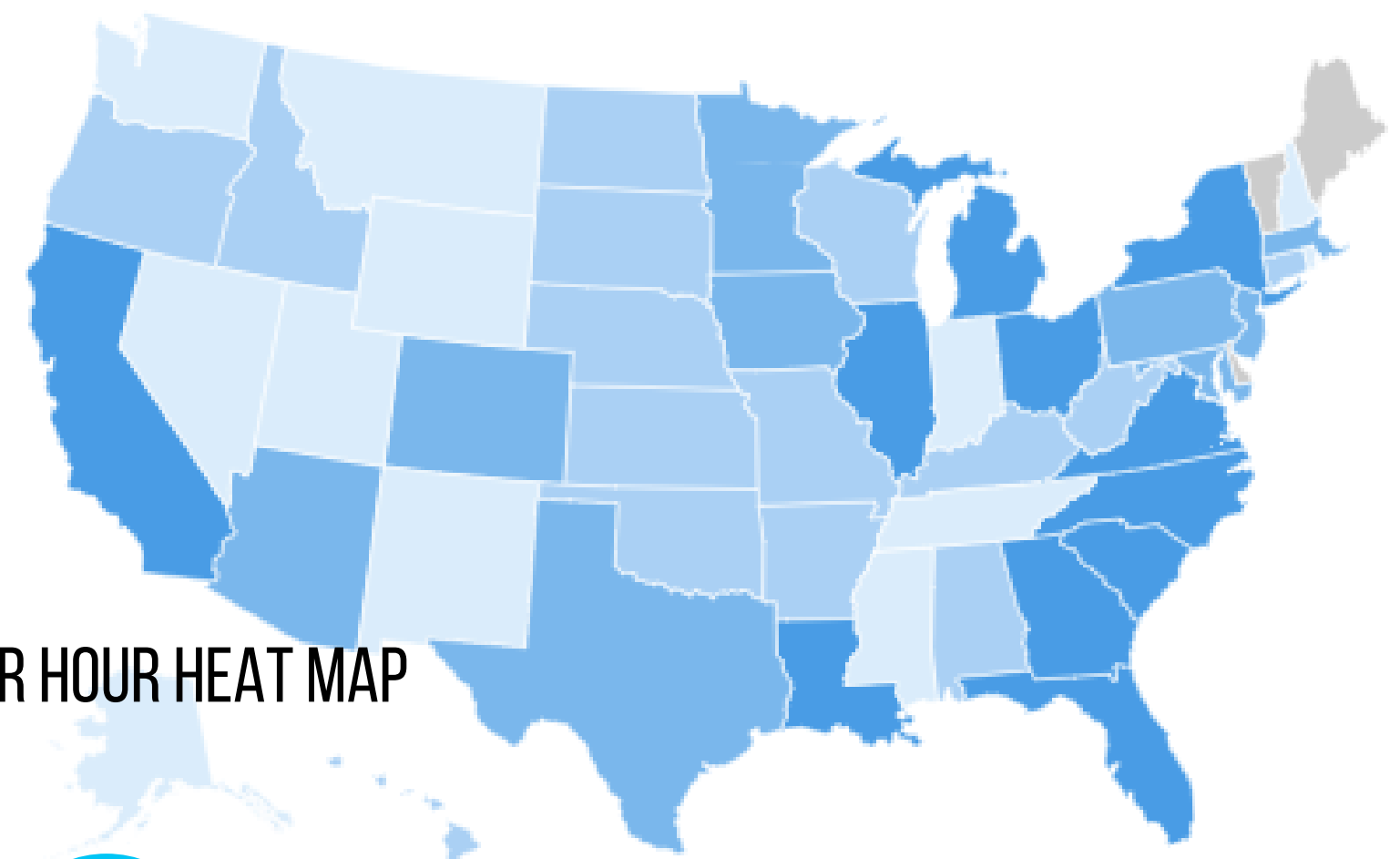
10.26 - 12.66

AVERAGE NUMBER OF HOURS PER STUDENT

HOW DO YOU MATCH UP?

DNA of a Top 25 community engagement program

- OCTOBER IS THE TOP MONTH FOR SERVICE 
- 56% OF HOURS ARE SERVED ON FRI, SAT, SUN.



HELPER HELPER HOUR HEAT MAP

On average the top 25 schools have 30 partner organizations and host 75 events throughout the year



www.helperhelper.com